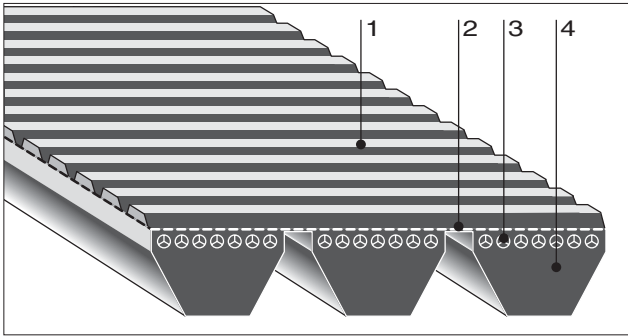


BANDO BANDO BANDED BANFLEX POLYURETHANE BELTS (BANFLEX SCRUM)



Construction

- 1: Polyurethane
- 2: Tie band
- 3: Polyester tensile members
- 4: Polyurethane compression section

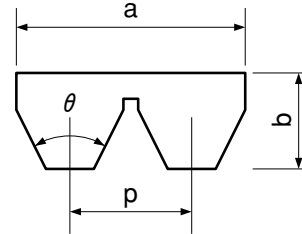
Features + Benefits

- Smooth high speed drive up to 12,000 feet/min.
- Low vibration without spin or jump off.
- Space saving
Small pulleys and high speed ratios make it possible to design compact and lightweight machines.
- Ideal for horizontal drive.
- High oil and ozone resistance.

Standard Sizes

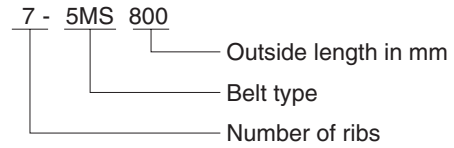
Outside length		Type			Outside length		Type			Outside length		Type		
mm	inch	5MS	7MS	11MS	mm	inch	5MS	7MS	11MS	mm	inch	5MS	7MS	11MS
280	11.0	○			580	22.8	○	○		1180	46.5	○	○	○
290	11.4	○			600	23.6	○	○		1220	48.0	○	○	○
300	11.8	○			615	24.2	○	○		1250	49.2	○	○	○
307	12.1	○			630	24.8	○	○		1280	50.4	○	○	○
315	12.4	○			650	25.6	○	○		1320	52.0	○	○	○
325	12.8	○			670	26.4	○	○		1360	53.5	○	○	○
335	13.2	○			690	27.2	○	○		1400	55.1	○	○	○
345	13.6	○			710	28.0	○	○	○	1450	57.1	○	○	○
355	14.0	○			730	28.7	○	○	○	1500	59.1	○	○	○
365	14.4	○			750	29.5	○	○	○	1550	61.0		○	○
375	14.8	○			775	30.5	○	○	○	1600	63.0		○	○
387	15.2	○			800	31.5	○	○	○	1650	65.0		○	○
400	15.7	○			825	32.5	○	○	○	1700	66.9		○	○
412	16.2	○			850	33.5	○	○	○	1750	68.9		○	○
425	16.7	○			875	34.4	○	○	○	1800	70.9		○	○
437	17.2	○			900	35.4	○	○	○	1850	72.8	○	○	○
450	17.7	○			925	36.4	○	○	○	1900	74.8		○	○
462	18.2	○			950	37.4	○	○	○	1950	76.8		○	○
475	18.7	○			975	38.4	○	○	○	2000	78.7		○	○
487	19.2	○			1000	39.4	○	○	○	2060	81.1		○	○
500	19.7	○	○		1030	40.6	○	○	○	2120	83.5		○	○
515	20.3	○	○		1060	41.7	○	○	○	2180	85.8		○	○
530	20.9	○			1090	42.9	○	○	○	2240	88.2		○	○
545	21.5	○	○		1120	44.1	○	○	○	2300	90.6		○	○
560	22.0	○	○		1150	45.3	○	○	○					

Dimensions



Type		Top width a		Thickness b		Pitch P
		mm	inch	mm	inch	
5MS	2 ribs	9.8	0.39	3.3	0.13	5.3mm (0.21")
	3 ribs	15.1	0.59			
7MS	2 ribs	15.6	0.61	5.3	0.21	8.5mm (0.33")
	3 ribs	24.1	0.95			
11MS	2 ribs	24.4	0.96	7.0	0.28	13.2mm (0.52")
	3 ribs	37.6	1.48			

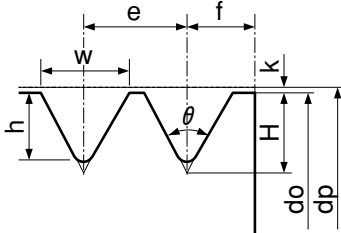
Size mark



BANFLEX SCRUM PULLEY

Banflex scrim apply to these pulley of the size as following.
In our company, Since we product these pulley, We are entirely at your service.

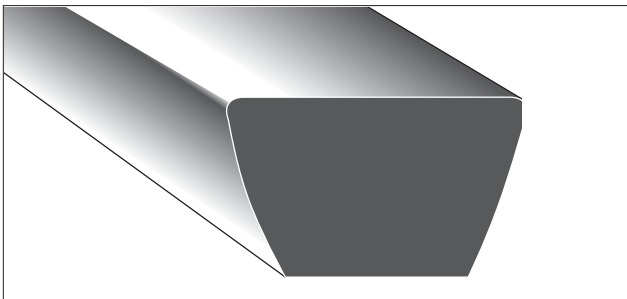
Dimensions



Standard Sizes

Type	W ±0.05 (mm)	e +0.13 -0.05 (mm)	f min (mm)	pulley size		h r max (mm)	H (mm)	r max (mm)	k (mm)
				angle					
				external diameter do (mm)	$\alpha \pm$ 1/4 (angle)				
5MS	4.50	5.30	3.5	25~28	60	3.50	3.90	0.4	0.5
				≤38	61	3.43	3.82		
				≤62	62	3.37	3.74		
				62~	63	3.31	3.67		
7MS	7.10	8.50	5.7	38~44	59	5.66	6.27	0.6	0.7
				≤62	60	5.55	6.15		
				≤100	61	5.44	6.03		
				100~	62	5.34	5.91		
11MS	11.20	13.20	8.6	60~80	60	8.90	9.70	0.8	0.5
				≤120	61	8.73	9.51		
				≤238	62	8.57	9.32		
				238~	63	8.41	9.14		

POLYURETHANE OPEN-END V BELT (CORDLESS) [BANCORD V BELT]



Construction

Polyurethane without tensile members

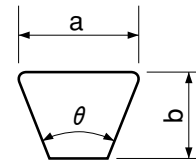
Features

Simply cut the belt to the required length and heat-splice the ends.

Standard Make Up

100m(328 feet) per roll.

Dimensions



Type	Top width a	Thickness b	Angle θ
SA	12.7mm (0.5")	7.0mm (0.27")	40°
SB	16.7mm (0.67")	9.0mm (0.35")	40°
SC	22.2mm (0.87")	11.0mm (0.43")	40°